



SANCTUM
Inle Resort – Myanmar



www.sanctum-inle-resort.com

OPENING DOORS ON A CONTEMPLATIVE JOURNEY

A destination as removed from the wider world as Inle Lake demands a resort where detachment is a priority. Where simplicity is the essence of elegance. Where contemplation, not bustle, reigns supreme. At the Santum Inle Resort, arches and cloisters reference the monastic life, opening the doors on a more contemplative experience of travel.

INLE LAKE

A timeless fisherman, rowing one-legged across the placid water at dawn. A floating vegetable garden, fertilized with decaying plant matter. The stilted wooden homes of waterfront villagers. A destination as lost in time as in the vast, unexplored realm of one of the world's most compelling destinations. This is Inle Lake. As the country's second largest lake, pooled at a lofty 800 meters above sea level, Inle is renowned for its waterborne life.



WINE & DINE

The Refectory

The menu at the Refectory celebrates must-eat standards of the Shan culinary arts, from noodles and soups to fresh garden salads, a delectable palate of curries, and a full complement of familiar Western dishes.

The Cloister Bar

Part-bar, part-lounge and altogether the place to swill a late-day cocktail, the Cloister Bar serves traditional favorites, Myanmar-brewed beers, two local premium vintages, and a short list of international wines cool in the cellars. Cuban and Dominican cigars will lure to aficionados cigars smokers.

MEETINGS & EVENTS

The Chapter Room

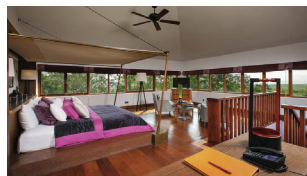
Our meeting room has view over the garden which enhances a fresh, contemporary interior design.

Chapter Room (size)	Round	Theater	U shape	Reception	Square
50sq.m/538sq.ft	20	30	12	30	14



ROOMS & SUITES

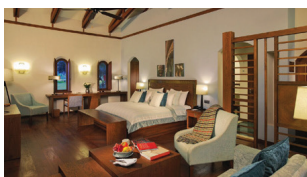
Inspired by the traveler's quest for change, the rooms at Sanctum Inle Resort celebrate the virtues of a monastic life. Though the design is minimalist, the hotel has integrated all of the modern comforts, from plush beds and air-conditioning. All guestrooms include LCD flat screen television, mini-bar, complementary Wifi internet access, tea and coffee making facilities, hairdryer, in-room personal safe, direct dial telephone.



ABBAY SUITE

- No. 02
- 100sq.m
- Lake View

A stairway connects the upstairs king bedroom with tiled bath to the downstairs living room and private terrace. Views from the Abbey Suite open to expansive views of the lake. Inside, wooden furnishings, floors and ceiling fans evoke Old World charm. Located on the first floor of the main building, the suite offers 100 square meters of living and sleeping space.



JUNIOR SUITE

- No. 12
- 66m2
- Garden/Lake View

At 60 square meters, the Provost Junior Suites deliver views of the lake or the garden. Located in stand-alone villas on the resort grounds or on the first floor in the main building, each junior suite features a private terrace and elegant timber floors.



FAMILY DELUXE

- No. 01
- 150sq.m
- Garden/Courtyard View

Lofty ceilings and a private terrace highlight the resort's most spacious retreat. Two king bedrooms, each with its own tiled bathroom including both tub and shower, connect to a large, shared living room. Located on the first floor of the main building, the Family Deluxe's 150 square meters take in views of verdant garden.



CLOISTER DELUXE

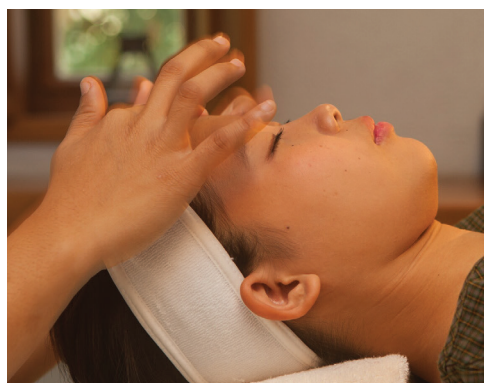
- No. 79
- 45sq.m
- Garden View

The Cloister Deluxe offer 40 to 45 square meters of luxury accommodation in the Cluster. The interiors are lofty and bright, and feature natural wood floors and views of the resort's garden. Each room has its own terrace.

SPA

Offering six treatment rooms - all with air conditioning and fans - on two floors with most of the rooms featuring individual showers decorated in harmonious colors by France's Brigitte Du Mont Chassart, who also designed the acclaimed La Residence Hotel & Spa in Hue, Vietnam. The ground floor consists of three single rooms with a small retail area and a reception area. The first floor features one single, one couple, the Thai massage room (with small private terrace) and an area with four foot massage chairs. The spa's teak furniture is hand made in a lakeside village 8 km from the resort. The floor is made from green cement tiles with warm ochre colors and natural teak wood.

The Spa is small and cozy and the emphasis is on personal service and good relaxing massages rather than belonging to an International spa brand. Our goal is to create a unique, individual spa experience.



SANCTUM INLE RESORT

Maing Thauk Village, Inle Lake,
Nyaung Shwe Township, Shan State, Myanmar
T. +95 (0) 925 281 88 00
reservation@sanctum-inle-resort.com

YANGON OFFICE

No. 147, Shwegonedaing Street, West Shwegonedaing Ward,
Bahan Township, Yangon, Myanmar
T. +95 (0) 186 049 45 F. +95 (0) 186 049 46
dos@sanctum-inle-resort.com



SANCTUM
Inle Resort - Myanmar