

New upscale hotel to open at Myanmar's Lake Inle

94-room Sanctum Inle Resort to launch on 1 October 2016



Written by:
Mark Elliott

Posted On:
2nd August, 2016 06:17 am

Posted In:
Hotel & Spa

[leave a comment](#)



A new upscale hotel will open on the shores of Myanmar's Lake Inle this October.

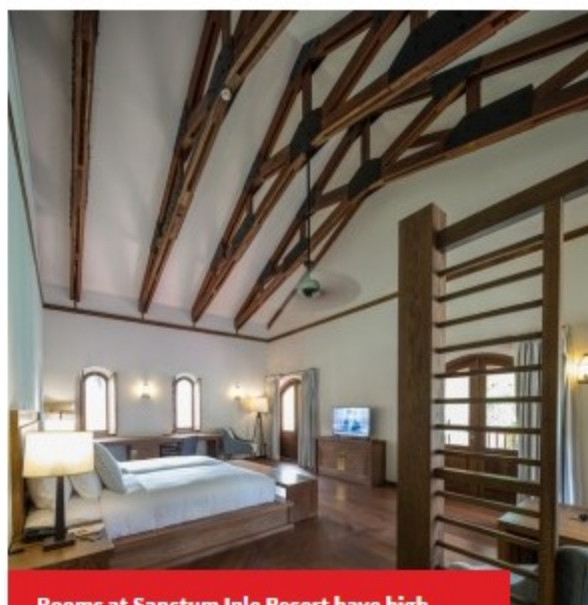
The 94-room Sanctum Inle Resort is positioned on the banks of the scenic lake, which is home to the famous "one-legged" Intha fishermen.

The hotel will feature an Olympic-sized saltwater swimming pool overlooking the lake, a restaurant serving local and international cuisine, a 170m² spa with five treatment rooms and a gym.

The accommodation will range in size from 40 to 150m², with all rooms and suites featuring wooden floors, high ceilings and cable TV.

Guests will also be offered the chance to take local tours, ranging from a half-day cycling excursions to full-day trips around the area's ancient temples.

"In a region long closed off to the wider world, we're opening the doors on an experience of accommodation that celebrates removal and contemplation," said Philippe Arnaud, the resort's general manager. "Our location invites this sort of mind-set, and our design does, as well."



Rooms at Sanctum Inle Resort have high ceilings

Subscribe to Travel Daily

Email:

Please enter your email address

[Job Opportunities](#)

[Subscribe now >](#)